

Welcome to all
Vendor Meet
Participants
24.10.2024



Quality Issues in Bogie Shop

- Semi Assembled Bogie Frame
 - Welding Cracks on :
 - Centre Pivot Area
 - Bogie Frames
 - TM Lug
 - Dummy Plate
- Profile Cutting of Horizontal Damper Bracket
- Less Paint Dry Film Thickness

Quality Issues in Bogie Shop

- Sand Boxes
- Gear Case Oil Leakage
- Axle Box Housing
- MSU
- Axle Guide Post
- Eccentric Centre Pivot Housing

Welding Defects Noticed on Bogie Frames

- Welding Crack
- Pin Holes
- Poor Penetration
- Bead not proper
- Blow Holes

Welding Crack on Bogie Frame



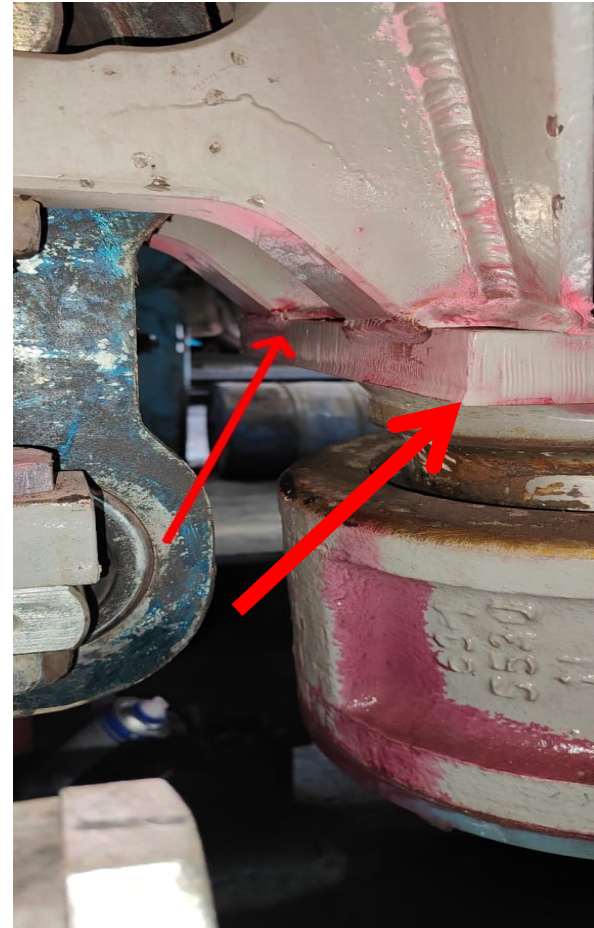
Welding Crack on Bogie Frame



Dummy Plate Location



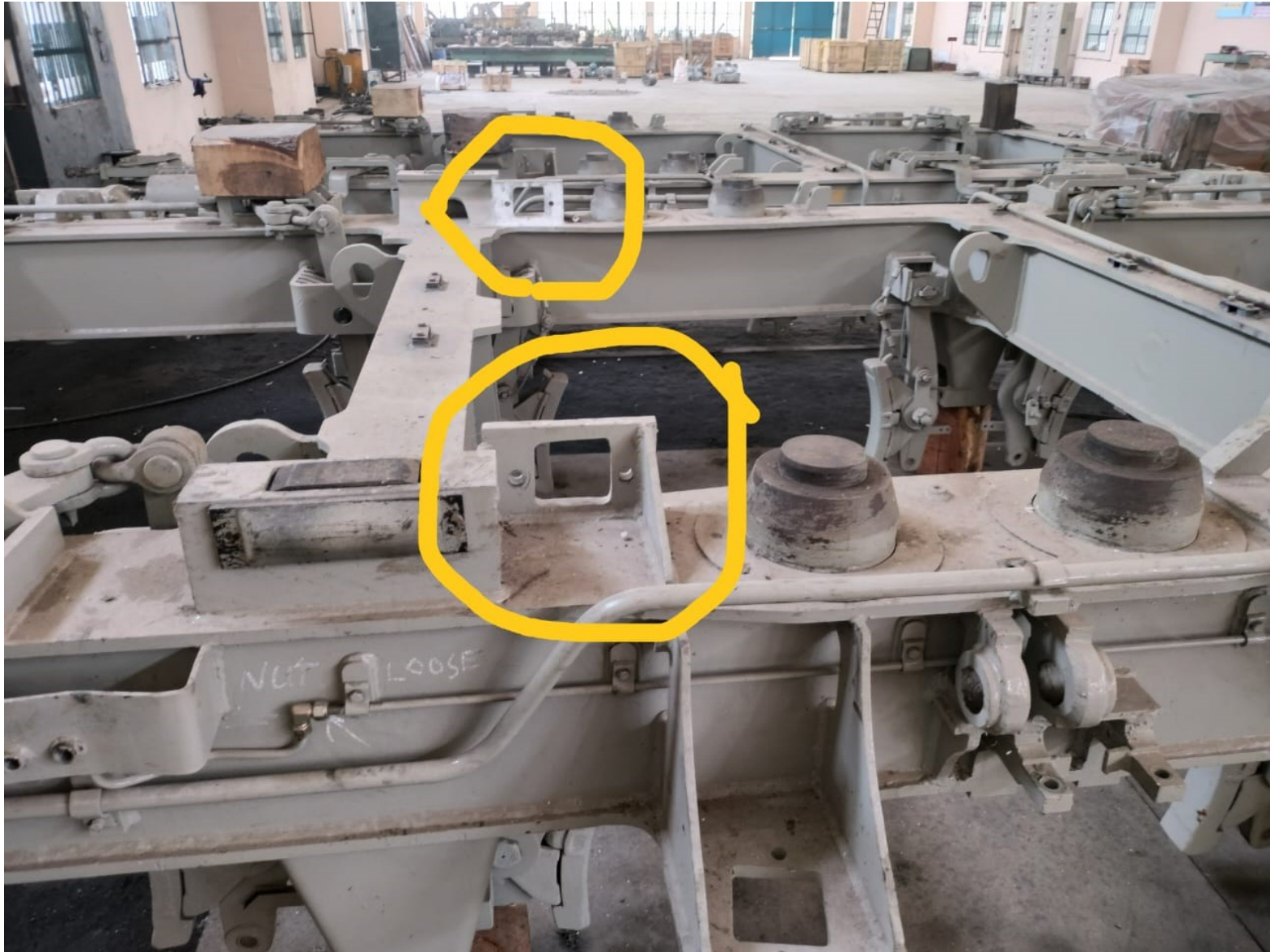
Centre Pivot Area



Traction Motor Mounting Lug



Horizontal Damper Bracket



Horizontal Damper Bracket



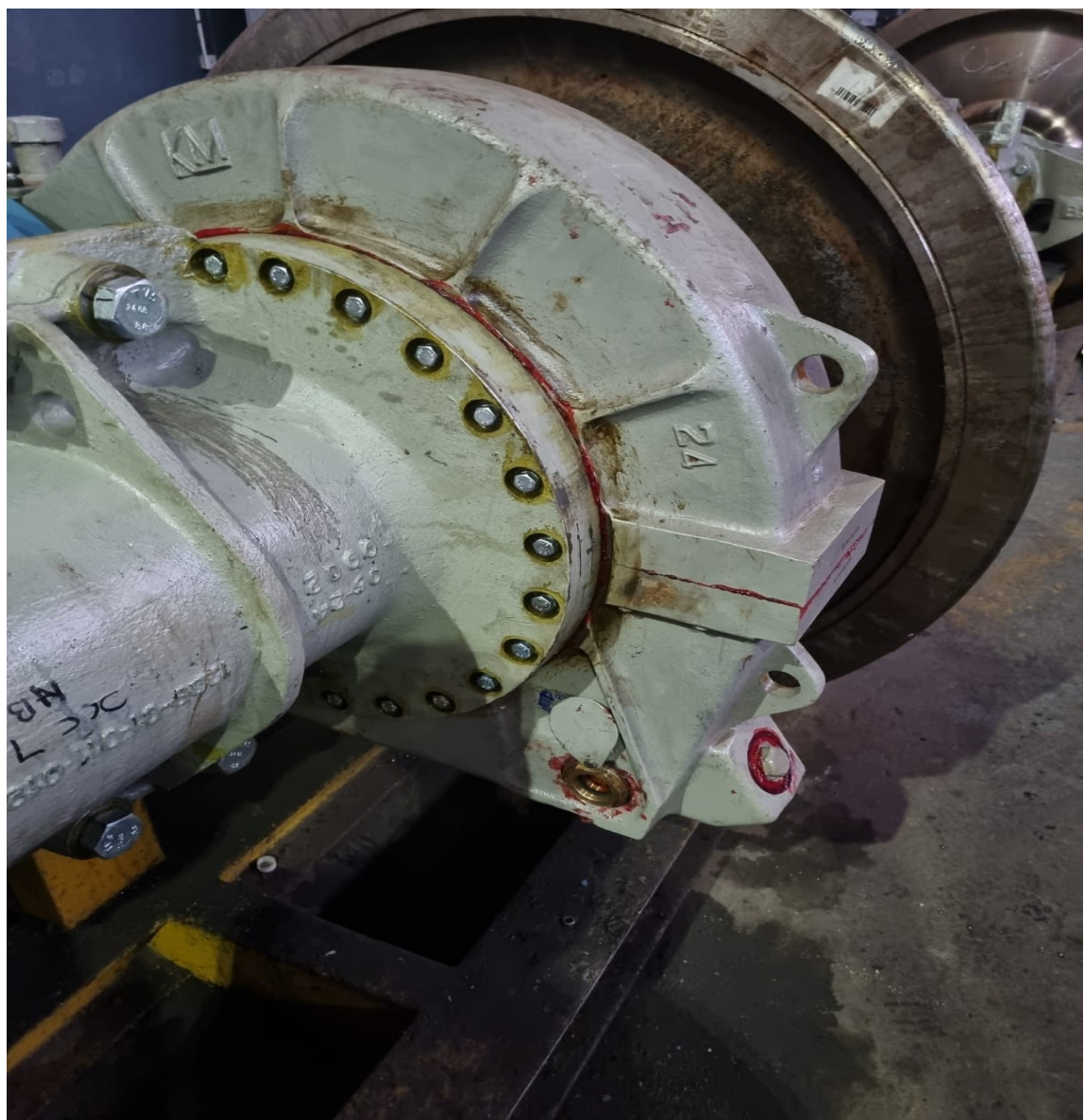


Dry Film Thickness of Paint

- Required DFT – 190 μm
- Reference – Design Letter No.
[ELDD/1720/Pt./600](#) dated 18.05.2024.
- MA already issued.

Gear Case Oil Leakage





Sand Box Defects

- Low Paint DFT
- Rusting on inner surface
- Paint Peeling
- Stud Broken
- Rubber Gasket not properly Glued
- Wing nut not proper
- Marking
- Proper Packing required

Broken Studs of Sand Box



Peeling of Paint from Sand Box



Rusting of Material



Traction Motor Holder Plate



R-10 & R-12 Radius Checking

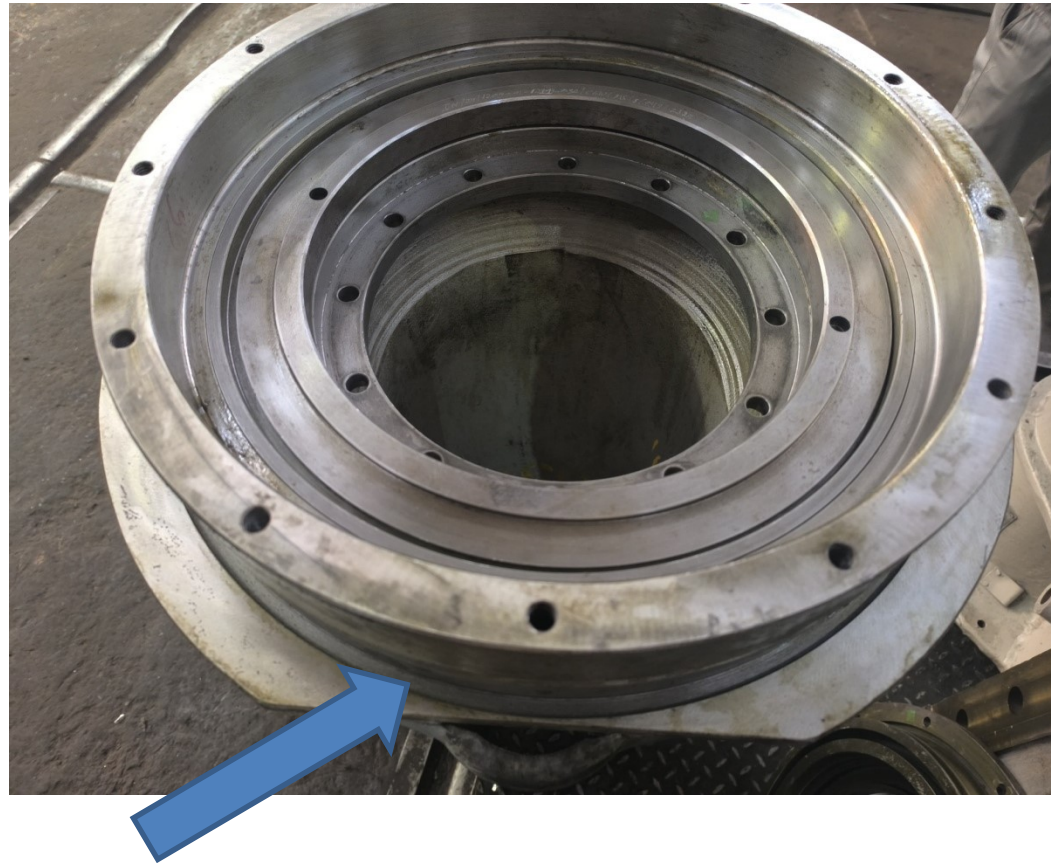


Axle Box Housing





Improper Oil Groove in MSU





Labyrinth ring without holes

Under Sized 'O' Ring



Misalignment of Axle Guide Post



3D-CMM

(Coordinate Measuring Machine)

Design Letter No. PLW/E/DRG/Loco/EL-101
(Bogie Frame) dated 05-09-2024 regarding
measurement of bogie Frame on 3D-CMM
(Coordinate Measuring Machine).

THANK YOU