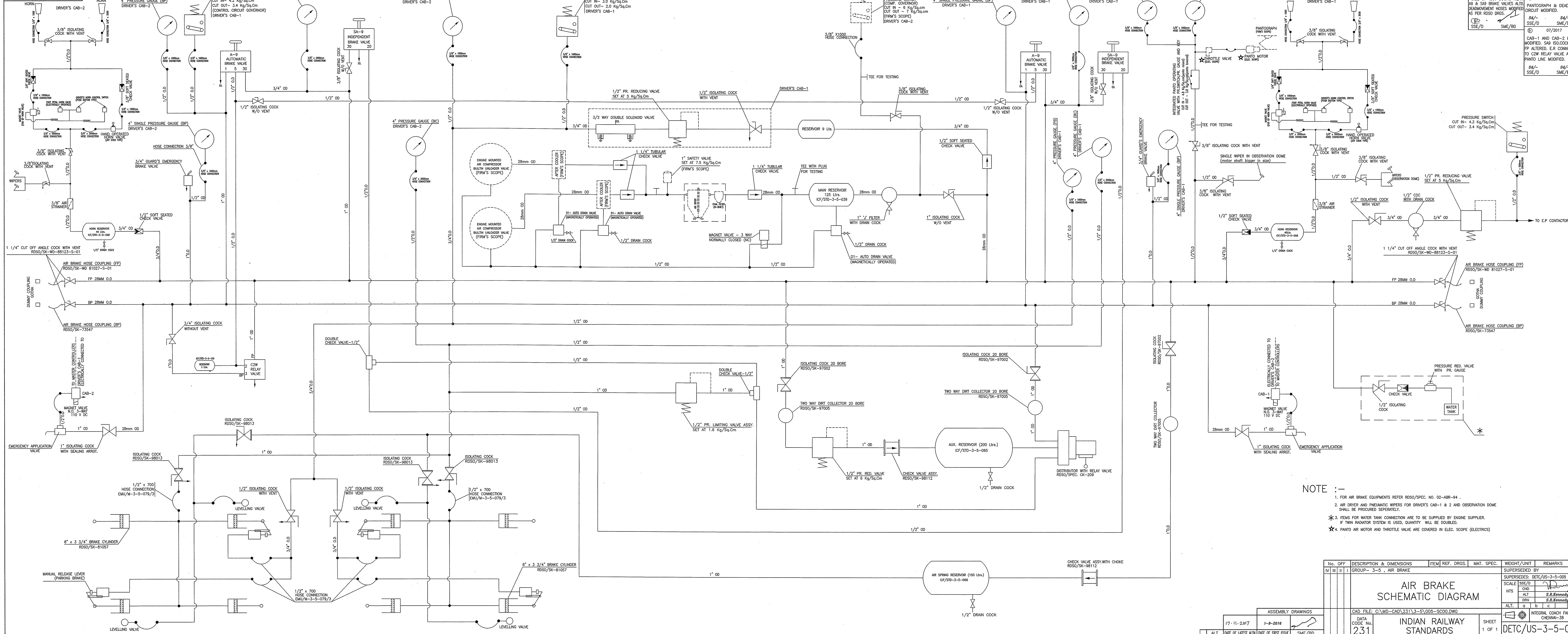


DETC/US-3-5-005



NO.	DATE	DESCRIPTION	BY	CHECKED BY
1	11/2017	ALTERATIONS	SSE/D	SME/BD
2	10/2016	SIZE OF ISO. COCKS NEAR A9 & S49 BRAKE VALVES ALTO DISMOVEMENT HOSES MODIFIED AS PER RSDO DRGS.	SSE/D	SME/BD
3	07/2017	CAD-1 AND CAB-2 ITEMS MODIFIED. S49 ISO COCK TO FP ALTERED. E.R CONNECTION TO C2W RELAY VALVE ALTD. PANTO LINE MODIFIED.	SSE/D	SME/BD

NOTE :-

- FOR AIR BRAKE EQUIPMENTS REFER RSDO/SPEC. NO. 02-ABR-84 .
- AIR DRIVER AND PNEUMATIC WIPERS FOR DRIVER'S CAB-1 & 2 AND OBSERVATION DOME SHALL BE PROVIDED SEPARATELY.
- ITEMS FOR WATER TANK CONNECTION ARE TO BE SUPPLIED BY ENGINE SUPPLIER. IF TWIN RADATOR SYSTEM IS USED, QUANTITY WILL BE DOUBLED.
- PANTO AIR MOTOR AND THROTTLE VALVE ARE COVERED IN ELEC. SCOPE (ELECTRICS)

No. OFF	DESCRIPTION & DIMENSIONS	ITEM REF. DRGS.	MAT. SPEC.	WEIGHT/UNIT	REMARKS
IV III I	GROUP- 3-5 , AIR BRAKE				
AIR BRAKE DIAGRAM					
CAD FILE: G:\WD-CAD\231\3-5\005-SC00.DWG					
DATA CODE No. 231					
INDIAN RAILWAY STANDARDS					
SHEET 1 OF 1					
DETC/US-3-5-005					